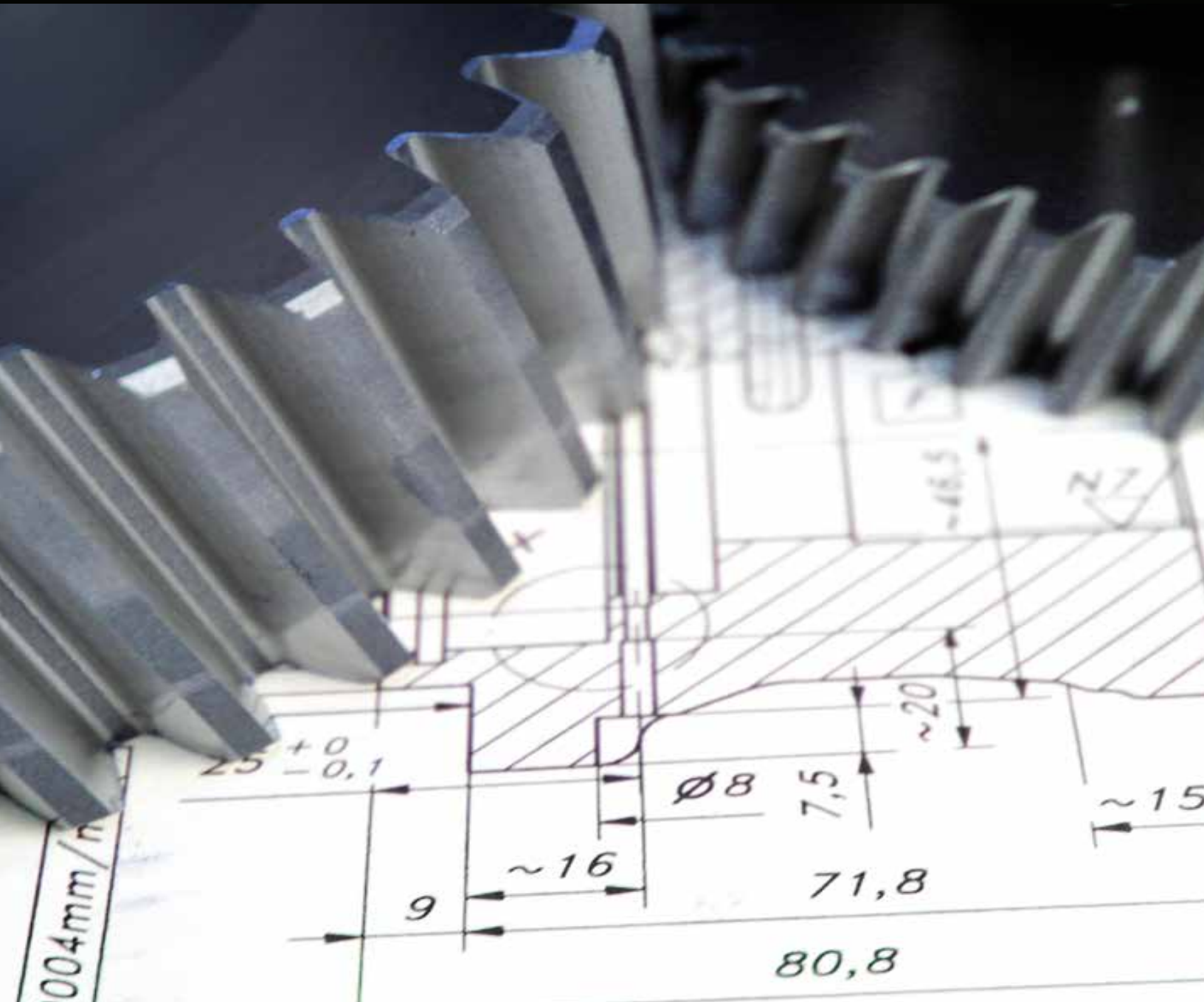


Wheelco
Customer Driven
Since 1961

MOBILE FLUID POWER



Sioux Falls, SD
800.952.3674

Mitchell, SD
888.996.8415

Watertown, SD
888.590.7080

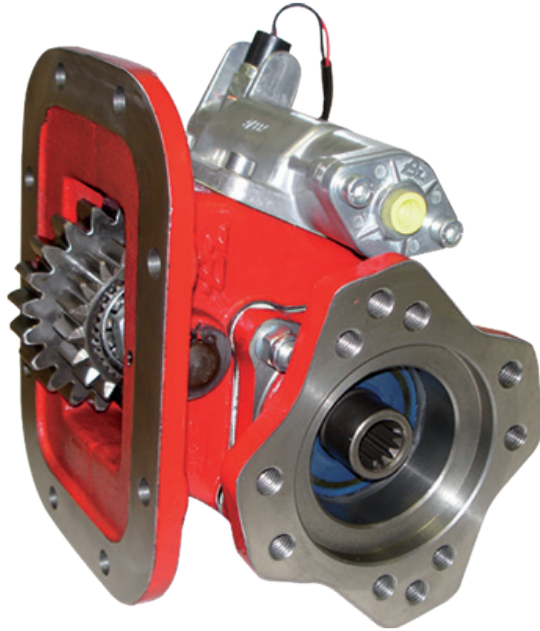
St. Cloud, MN
888.704.4242

St. Paul, MN
651.459.1487

Savage, MN
952.373.8130

1000 SAE 6 Hole & 2000 SAE 8 Hole | Two Gear-Single Speed | Standard Mounting

The 1000/2000 Series PTO has been engineered to work with most of the existing transmissions on the market. It is a very durable PTO with a wide range of input gears, shifters, speed ratios and output shafts to meet all of the market applications.



Product Features

- » Industry exclusive idler shaft with locking nut and snap ring.
- » Deep gear tooth carburization for longer gear life.
- » Larger flange mounting hardware provides additional support and reduces failures caused by heavy pumps – best in class.
- » Industry leading Garlock gasket material provides better tear resistance and easier installation, with Viton o-ring material & shaft seals to prevent leaks.
- » Symmetrical design allows for multiple configuration options and ease of installation.
- » Simple and robust mechanical air shift operation.
- » Quiet operational noise levels for an improved operator experience.

POPULAR 2000 PTO SERIES

PART NUMBER	DESCRIPTION	PRODUCT INFORMATION
PT2000XBN013RA	Bottom Mount Eight Bolt Air Shift	93-100% Engine Speed 7/8"-13T Direct Mount
PT2000XCN013RA	Bottom Mount Eight Bolt Air Shift	123-131% Engine Speed 7/8"-13T Direct Mount
PT2000XEN013RA	Bottom Mount Eight Bolt Air Shift	147-156% Engine Speed 7/8"-13T Direct Mount
PT2000XJN013RA	Bottom Mount Eight Bolt Air Shift	160-170% Engine Speed 7/8"-13T Direct Mount
PT2000XEN013RB	Bottom Mount Eight Bolt Air Shift	147-156% Engine Speed 1"-15T Direct Mount

PRODUCT SPECS

PTO SERIES	INTERMITTENT SERVICE		CONTINUOUS SERVICE		WEIGHT (LB)
	MAX. TORQUE (LB. FT)	MAX. POWER (HP @ 1000 RPM)	MAX. TORQUE (LB. FT)	MAX. POWER (HP @ 1000 RPM)	
1000	250	49	178	35	32
2000	250	49	178	35	34

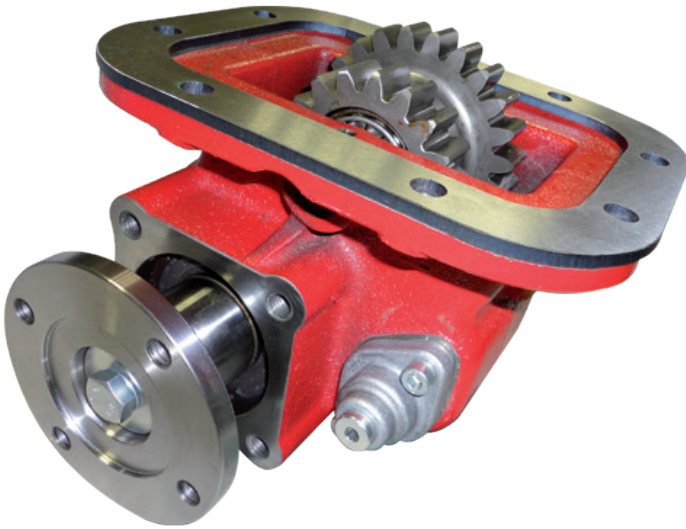
SHOP OUR NEW AND INNOVATIVE PRODUCTS ONLINE.

4100 SAE 8 Hole | Heavy Duty | Standard Mounting

The 4100 Series is a heavy duty PTO with a 475 ft./lb. torque rating, in a lightweight and compact package. It's able to fit applications that require high torque demands and is smaller and lighter than competitive products for nearly all applications.

Product Features

- » Industry leading weight-to-torque ratio provides outstanding performance for the price.
- » Low profile, compact PTO is lighter and easy to install.
- » Large, oversize bearings provide long life on higher torque applications such as blowers.
- » Robust, integrated air shifter in the housing features a smooth engagement design to reduce clash shifting.
- » Industry leading gasket material and Viton o-ring material & shaft seals.



POPULAR 4100 PTO SERIES

PART NUMBER	DESCRIPTION	PRODUCT INFORMATION
PT4100XJN011IC	Bottom Mount Eight Bolt Air Shift	170-180% Engine Speed SAE 1400 Flange High Torque Applications

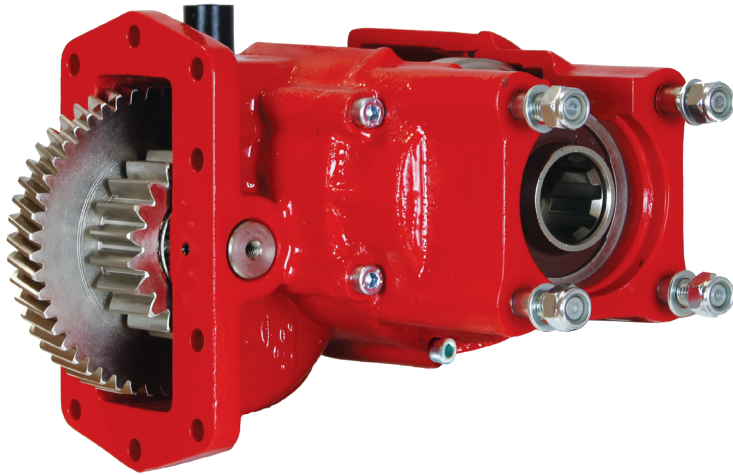
PRODUCT SPECS

PTO SERIES	INTERMITTENT SERVICE		CONTINUOUS SERVICE		WEIGHT (LB)
	MAX. TORQUE (LB. FT)	MAX. POWER (HP @ 1000 RPM)	MAX. TORQUE (LB. FT)	MAX. POWER (HP @ 1000 RPM)	
4100	420	90	340	65	37

SHOP OUR NEW AND INNOVATIVE PRODUCTS IN STORE.

3252 | Allison 10 Bolt | Low-Profile PTO

The 3252 is a new, low-profile PTO, engineered to assist with the space constraints that are faced in modern trucks. An internal lubrication design eliminates one hose and reduces install time, saving unnecessary cost. A wide range of output and gear ratio options allows the 3252 to fit many applications.



Product Features

- » Internally lubricated for ease of installation, improved bearing life and cooler operation.
- » Clutch pack material is designed to provide smooth engagement and long life.
- » Low profile housing features a rotatable solenoid cover for easier installation in tight clearance applications.
- » Higher torque rating than competitors within the same PTO segment.
- » All hoses, hardware, and wiring are included.

POPULAR 3252 PTO SERIES

PART NUMBER	DESCRIPTION	PRODUCT INFORMATION
PT3252PCE633SA	Allison 10 Bolt Clutch Shift	12V Electric Over Hydraulic Shift 7/8"-13T Direct Mount
PT3252PJE633SA	Allison 10 Bolt Clutch Shift	12V Electric Over Hydraulic Shift 7/8"-13T Direct Mount

PRODUCT SPECS

PTO SERIES	INTERMITTENT SERVICE		CONTINUOUS SERVICE		WEIGHT (LB)
	MAX. TORQUE (LB. FT)	MAX. POWER (HP @ 1000 RPM)	MAX. TORQUE (LB. FT)	MAX. POWER (HP @ 1000 RPM)	
3252	410	78	310	59	30

SHOP OUR NEW AND INNOVATIVE PRODUCTS ONLINE.

3800 8 Bolt | Universal

The 3800 Series PTO was developed based on the 3200 Series, which has been proven in the market for over a decade. The 3800 Series meets the demands of the market for a hot shift PTO for the 8 bolt aperture. This PTO features air shifting, and a wide range of ratios and outputs.



Product Features

- » Symmetrical housing design allows for multiple configuration options to fit the application.
- » Housing design permits "shaft high" and "shaft low" installation.
- » Industry exclusive idler shaft with locking nut.
- » Industry leading gasket material and Viton o-ring material & shaft seals.
- » Deep gear tooth carburization process creates stronger gear surfaces for long life.
- » Clutch pack material is designed to provide smooth engagement and long life.

POPULAR 3800 PTO SERIES

PART NUMBER	DESCRIPTION	PRODUCT INFORMATION
PT3800XCN011SA	Bottom Mount Eight Bolt Clutch Shift	123-131% Engine Speed 7/8"-13T Direct Mount

PRODUCT SPECS

PTO SERIES	INTERMITTENT SERVICE		CONTINUOUS SERVICE		WEIGHT (LB)
	MAX. TORQUE (LB. FT)	MAX. POWER (HP @ 1000 RPM)	MAX. TORQUE (LB. FT)	MAX. POWER (HP @ 1000 RPM)	
3200	250	49	178	35	30
3800	250	49	178	35	30

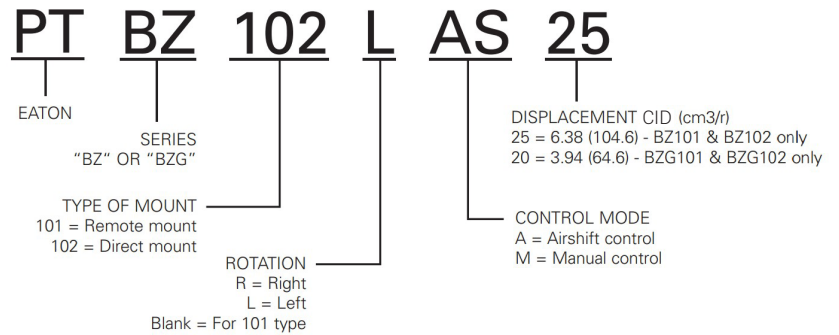
SHOP OUR NEW AND INNOVATIVE PRODUCTS IN STORE.

Product Information

A full range of high quality dump pumps in stock for quick shipping, including small to full size series; manual or air shift. Direct mount SAE B 4-bolt, DIN (special order), or twin shaft remote mount available on all models. New DIN 5462 option available on full size series model only.



Part Number Breakdown



POPULAR DUMP PUMPS

PART NUMBER	DESCRIPTION	PRODUCT INFORMATION
PTBZ102LMS25	Dump Pump LH 25 GPM With Air Shift Cylinder	7/8"-13 Spline Direct Mount B-Flange 2500 PSI Continuous Pressure Rating
PTBZ102LAS25	Dump Pump LH 25 GPM Manual Shift Without Air Cylinder	7/8"-13 Spline Direct Mount B-Flange 2500 PSI Continuous Pressure Rating

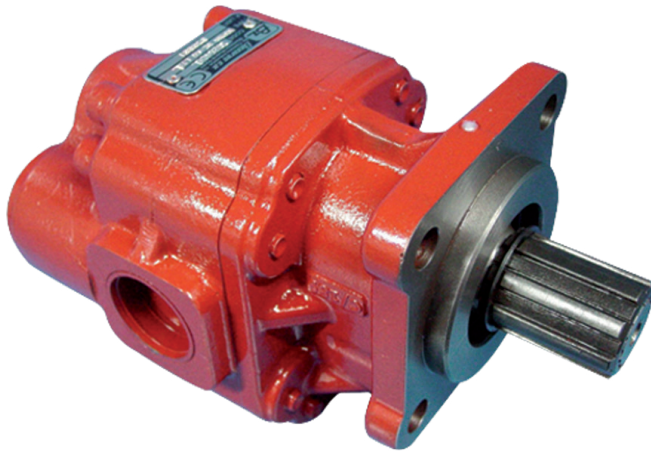
PRODUCT SPECS

FLOW-POWER @ 2500 PSI SPEED (RPM)	FLOW GPM	
	BZG 101/102	BZ 101/102
900	13.5	22
1200	18.5	30
1500	23.5	39
1800	29	47
2100	34	55
2400	39	51

SHOP OUR NEW AND INNOVATIVE PRODUCTS ONLINE.

BEL Series

Bi-rotational pump with a cast iron housing, giving it great resistance to high pressures and RPMs. Available with ISO 4-bolt and SAE 2/4-bolt flanges. Available in ISO 4 and UNI 3 versions.



Product Features

- » BEL series is a bi-rotational bushing style gear pump with side and rear ports.
- » Designed and engineered for a wide range of applications offering high efficiency and performance.
- » A wide range of flanges, shafts, displacements, and porting options available.
- » Gear pump with reversible rotation direction and internal drainage.
- » Rear and side ports.

POPULAR GEAR PUMPS

PART NUMBER	DESCRIPTION	PRODUCT INFORMATION
PTBELA16S20	Gear Pump 16 GPM 1-1/4" O-Ring Boss Ports	7/8"-13 Spline Direct Mount B-Flange 3800 PSI Continuous Pressure Rating
PTBELA19S20	Gear Pump 19 GPM 1-1/4" O-Ring Boss Ports	7/8"-13 Spline Direct Mount B-Flange 3500 PSI Continuous Pressure Rating
PTBELA22S20	Gear Pump 22 GPM 1-1/4" O-Ring Boss Ports	7/8"-13 Spline Direct Mount B-Flange 2700 PSI Continuous Pressure Rating
PTBELA26S20	Gear Pump 26 GPM 1-1/4" O-Ring Boss Ports	7/8"-13 Spline Direct Mount B-Flange 2600 PSI Continuous Pressure Rating

PRODUCT SPECS

GPM @ 1000 RPM	DISPLACEMENT (IN ³ /REV)	MAX. PRESSURE P3 (PSI)	MAX. SPEED (IN ³ /REV)
13	3.05	4600	2750
16	3.66	4500	2750
19	4.27	4200	2750
22	4.88	3900	2500
26	6.1	3400	2500
30	7.02	3300	2500

SHOP OUR NEW AND INNOVATIVE PRODUCTS IN STORE.

Aluminum Side Mount



Product Features

- » Versatile reservoir works for many hydraulic/fluid storage applications.
- » Features 2 inch NPT suction/return ports on either end of the tank.
- » Durable, light-weight aluminum construction for appearance and corrosion resistance.
- » Attractive cylindrical design matches many fuel tanks for a neat, coordinated appearance.
- » Mounting hardware, insulated mounting straps, and a filler breather unit with basket strainer included.

POPULAR ALUMINUM SIDE MOUNTS

PART NUMBER	DESCRIPTION	PRODUCT INFORMATION
SMC35A	35 Gallon Aluminum Reservoir	Aluminum Side Mount Hydraulic Reservoir
SMC50A	50 Gallon Aluminum Reservoir	Aluminum Side Mount Hydraulic Reservoir

Aluminum Side Mount With Rear Ports



Product Features

- » Dual, rear 2 inch NPT suction/return ports.
- » Durable, light-weight aluminum construction is corrosion resistant and looks like a natural extension of your truck.
- » Internally baffled to reduce sloshing.
- » Versatile reservoir works for many hydraulic/fluid storage applications.
- » Heavy duty mounting brackets wrap underneath the tank for superior stability and support.
- » Insulated stainless steel mounting straps, temperature/level gauge, and chrome-plated polymer filler-strainer breather cap included.

POPULAR ALUMINUM SIDE MOUNTS WITH REAR PORTS

PART NUMBER	DESCRIPTION	PRODUCT INFORMATION
SMC25AR	25 Gallon Aluminum Reservoir	Aluminum Side Mount Reservoir With Rear Ports
SMC35AR	35 Gallon Aluminum Reservoir	Aluminum Side Mount Reservoir With Rear Ports
SMC50AR	50 Gallon Aluminum Reservoir	Aluminum Side Mount Reservoir With Rear Ports

SHOP OUR NEW AND INNOVATIVE PRODUCTS ONLINE.

Aluminum Upright Mount



Product Features

- » Upright design fits conveniently behind truck cab.
- » Quality aluminum construction for lighter weight and excellent heat dissipation.
- » Attractive diamond-tread design on upper half.
- » Fully baffled to keep oil cool and moving correctly.
- » Includes level/temperature sight gauge.

POPULAR ALUMINUM UPRIGHT MOUNT

PART NUMBER	DESCRIPTION	PRODUCT INFORMATION
UR50A	50 Gallon Aluminum Reservoir	Aluminum Upright Hydraulic Reservoir

Steel Upright Mount



Product Features

- » Upright design fits behind truck cab.
- » Tough 12 gauge steel construction is made to withstand heavy duty jobs.
- » Allows greater heat dissipation to keep fluid cool.
- » Fully baffled to direct fluid internally.
- » Includes level/temperature sight gauge.

POPULAR STEEL UPRIGHT MOUNTS

PART NUMBER	DESCRIPTION	PRODUCT INFORMATION
UR50S	50 Gallon Steel Reservoir	Steel Upright Hydraulic Reservoir
UR70S	70 Gallon Steel Reservoir	Steel Upright Hydraulic Reservoir

SHOP OUR NEW AND INNOVATIVE PRODUCTS IN STORE.

Steel Side Mount



Product Features

- » Welded brackets for easy mounting to truck frame.
- » Features 2 inch NPT suction/return port.
- » Durable 13 gauge HRPO steel construction with black powder-coated finish for superior corrosion resistance.
- » Versatile reservoir works for many hydraulic/fluid storage applications.
- » Fully internally baffled to reduce sloshing and help keep oil cool and properly flowing.
- » Quarter-turn chrome filler/breather unit complete with basket strainer, magnetic drain plug, and fluid level gauge included.

POPULAR STEEL SIDE MOUNTS

PART NUMBER	DESCRIPTION	PRODUCT INFORMATION
SMR15S	15 Gallon Steel Reservoir	Steel Side Mount Reservoir With Rear Ports
SMR25S	25 Gallon Steel Reservoir	Steel Side Mount Reservoir With Rear Ports
SMR30S	30 Gallon Steel Reservoir	Steel Side Mount Reservoir With Rear Ports

Steel Side Mount With Micron Filter



Product Features

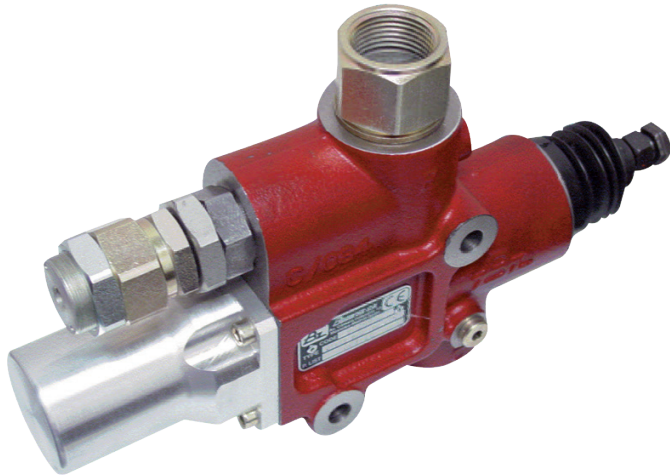
- » Tough, durable 13 gauge HRPO steel that has been factory powder-coated for corrosion resistance.
- » Pre-drilled for an included 10 micron filter (*shipped separately*).
- » Fluid level and temperature gauge included.
- » Contaminant-catching magnetic drain plug.
- » Welded-on mounting bracket for easy install to the truck frame.

POPULAR STEEL SIDE MOUNTS WITH MICRON FILTER

PART NUMBER	DESCRIPTION	PRODUCT INFORMATION
SMR15SF10	25 Gallon Steel Reservoir	Steel Side Mount Hydraulic Reservoir With 10 Micron Filter
SMR25SF10	25 Gallon Steel Reservoir	Steel Side Mount Hydraulic Reservoir With 10 Micron Filter

SHOP OUR NEW AND INNOVATIVE PRODUCTS ONLINE.

Dual Pressure Combo Tipping Valve



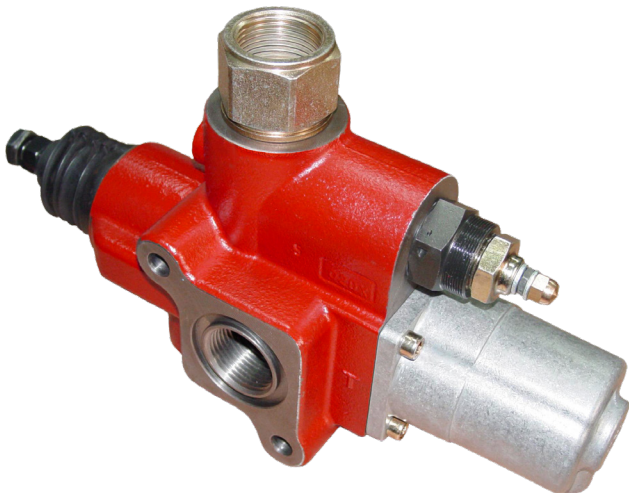
Product Features

This valve is an air operated dual pressure tipping valve with two independent operating pressures. This valve is a perfect fit for a walking floor and dump combination, at a fraction of the cost of other options.

POPULAR DUAL PRESSURE VALVE

PART NUMBER	DESCRIPTION	PRODUCT INFORMATION
PT9030890	Dual Pressure Combo Tipping Valve	Used To Operate 2 Functions End Dump & Continuous Duty

Single Pressure Tipper Valve



Product Features

This air operated single pressure tipper valve is a perfect fit for applications where a dump pump is not applicable due to clearance issues with certain transmissions, or most rear mount PTO applications where supporting the pump requires extensive fabrication and increased labor costs.

POPULAR SINGLE PRESSURE VALVE

PART NUMBER	DESCRIPTION	PRODUCT INFORMATION
PT9058090	Single Pressure Tipper Valve	Remote End Dump Used With Gear Pumps For Space Consideration

SHOP OUR NEW AND INNOVATIVE PRODUCTS IN STORE.

Hydraulic Selector Valves | AV-295 Series

The original AV-295 Valve provides compact, consolidated controls for PTO, dump pump, and tailgate latch. Available as a stand-alone valve or as a console, operating a dump body has never been easier.

Product Features

- » Controlled lowering
- » Automatic disengagement of PTO in lower-position
- » Safety latch on PTO switch to prevent accidental engagement
- » Brighter LED light
- » Push-to-connect fittings



AVC-295-13



AVC-295-TGMT-13



CONV-APS-8-LT

POPULAR HYDRAULIC SELECTOR VALVES

PART NUMBER	DESCRIPTION	PRODUCT INFORMATION
AVC-295-13	PTO Hoist Control Valve With Console	13" Console Metering And PTO Auto Kick-Out In Down Position
AVC-295-TGMT-13	PTO Hoist Control Valve With Console	13" Console Metering And PTO Auto Kick-Out In Down Position With Tarp Switch & Tailgate Latch Control
CONV-APS-8-LT	Air Control Console Assembly	14" Console AV295 PTO Hoist Control Tailgate Control Valve With 3 Switch Openings

SHOP OUR NEW AND INNOVATIVE PRODUCTS ONLINE.

Air Selector Valves | 3-Way Two-Position

APSCO's high quality air toggle valves for a variety of applications. It features a heavy duty, robust stainless toggle.

3 Position Valves

- » Includes push-connect fittings for easy installation
- » Space efficient porting
- » Side porting options



VTS-1X



VTS-9X



VTS-11X

POPULAR AIR SELECTOR VALVES

PART NUMBER	DESCRIPTION	PRODUCT INFORMATION
VTS-1X	Air Toggle Valve	3 Position - Momentary / Neutral / Momentary (BAV020T)
VTS-9X	Air Toggle Valve	3 Position - Detent / Neutral / Detent (BAV020TD)
VTS-11X	Air Toggle Valve	3 Position - Momentary / Neutral / Detent

In-Line Relief Valve

Buyers Products In-Line Relief Valve provides pressure relief to specific functions in your truck's hydraulic operations.

Product Features

- » Provides pressure relief to specific functions in your hydraulic system.



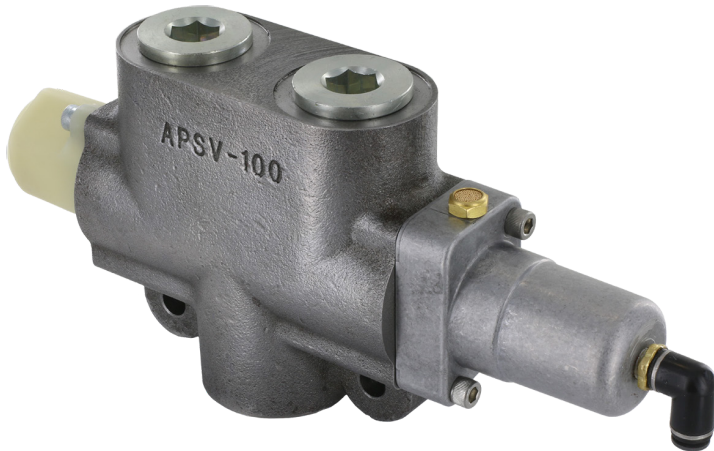
POPULAR IN-LINE RELIEF VALVE

PART NUMBER	DESCRIPTION	PRODUCT INFORMATION
HRV10025	In-Line Relief Valve	1" NPT In-Line Relief Valve 50 GPM 1000-3000 PSI

SHOP OUR NEW AND INNOVATIVE PRODUCTS IN STORE.

Hydraulic Selector Valves | 3-Way Two-Position

The APSCO APSV-100 is a 3-way two-position selector valve. It is designed for directing flow from one pump to either of two hydraulic circuits. It is available as a manual shift or as a pneumatically actuated valve that can be operated from the cab.



Product Features

- » Designed for multiple mobile applications.
- » Available with pneumatic direct mount actuator, no exposed moving parts.
- » Available with 2-position manual push/pull control.

POPULAR HYDRAULIC SELECTOR VALVES

PART NUMBER	DESCRIPTION	PRODUCT INFORMATION
APSV-100-A	Hydraulic Selector Valve	3-Way Two-Position To Operate 2 Different Hydraulic Circuits

Monoblock Directional Spool Valve



Product Features

- » Rated at 30 GPM and working pressure of 2500 PSI (Maximum 4000 PSI).
- » Built-in load checks to prevent reverse flow when shifting.
- » Adjustable relief valve (Factory-set at 2000 PSI/10 GPM).
- » Minimal leakage and smooth operation provided by precision-machined and ground spools.
- » External spool seals can be easily replaced without having to disassemble the valve.
- » Also available in 2 or 3 spools for additional configuration needs.

POPULAR MONOBLOCK DIRECTIONAL SPOOL VALVES

PART NUMBER	DESCRIPTION	PRODUCT INFORMATION
HV11AGOOD0	Spool Valve Side Dump Application	1 Spool Directional Control Valve 4-Way Spring Center
AS1	Single Spool Air Cylinder	Air Shift Cylinder-Spool Valve Control

Extended Life™ XR16SC High-Pressure Hose

When the job requires tight bends, flexibility, and abrasion resistance, this high-pressure hydraulic hose steps up to the task. Using a nitrile inner tube, two high-tensile steel wire braids of reinforcement and the Extended Life™ extra abrasion-resistant cover, it can handle a system working pressure up to 5800 PSI (31 MPa).



Product Features

- » Extended Life™ Cover
- » NEW large bore sizes now available (-20, -24 & -32)
- » All XR16SC sizes use B2 series fittings
- » Meets Flame Resistance USMSHA Designation

Bite-To-Wire Fittings

Continental's crimp fittings provide maximum coupling retention on 1- and 2-braid hose as well as 4- and 6-spiral hose. Serrations penetrate the cover with a powerful bite into the wire reinforcement, resulting in even hose compression.

Our B2- and SG-families of 1-pc., no-skive, crimp fittings cover nearly all sizes of wire-braid and wire-spiral reinforced hoses—providing a level of confidence and security when matching the right hose and the right fitting.



Quick Disconnect Couplings

Continental has partnered with a leading innovator in the hose coupling industry—Dixon Quick Coupling, a division of Dixon Valve. This partnership provides you with a broad line of high-quality quick disconnect couplings.

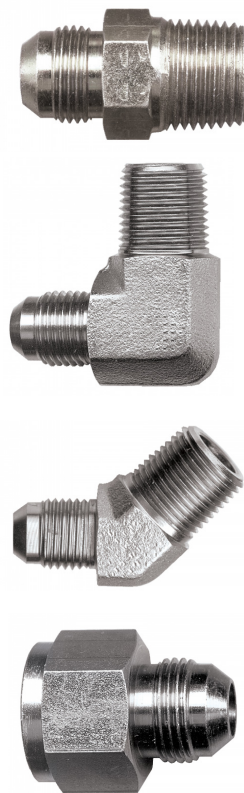
Together, Continental and Dixon give you access to industry-leading market knowledge, engineering excellence from state-of-the-art American facilities and superior service.



SHOP OUR NEW AND INNOVATIVE PRODUCTS IN STORE.

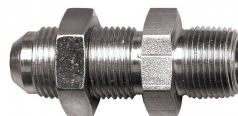
STEEL 37° JIC FLARE ADAPTERS

PART NUMBER	DESCRIPTION	PRODUCT INFORMATION
S3748-12E	JIC 37° Male to Male NPTF Straight Connector	3/4" Tube x 3/4" Pipe
S3748-12H	JIC 37° Male to Male NPTF Straight Connector	3/4" Tube x 1" Pipe
S3748-12J	JIC 37° Male to Male NPTF Straight Connector	3/4" Tube x 1-1/4" Pipe
S3748-16E	JIC 37° Male to Male NPTF Straight Connector	1" Tube x 3/4" Pipe
S3748-16H	JIC 37° Male to Male NPTF Straight Connector	1" Tube x 1" Pipe
S3748-16J	JIC 37° Male to Male NPTF Straight Connector	1" Tube x 1-1/4" Pipe
S3748-16K	JIC 37° Male to Male NPTF Straight Connector	1" Tube x 1-1/2" Pipe
S3748-20H	JIC 37° Male to Male NPTF Straight Connector	1-1/4" Tube x 1" Pipe
S3748-20J	JIC 37° Male to Male NPTF Straight Connector	1-1/4" Tube x 1-1/4" Pipe
S3749-12E	JIC 37° Male to Male NPTF 90° Elbow	3/4" Tube x 3/4" Pipe
S3749-12H	JIC 37° Male to Male NPTF 90° Elbow	3/4" Tube x 1" Pipe
S3749-12J	JIC 37° Male to Male NPTF 90° Elbow	3/4" Tube x 1-1/4" Pipe
S3749-16E	JIC 37° Male to Male NPTF 90° Elbow	1" Tube x 3/4" Pipe
S3749-16H	JIC 37° Male to Male NPTF 90° Elbow	1" Tube x 1" Pipe
S3749-16J	JIC 37° Male to Male NPTF 90° Elbow	1" Tube x 1-1/4" Pipe
S3749-16K	JIC 37° Male to Male NPTF 90° Elbow	1" Tube x 1-1/2" Pipe
S3749-20J	JIC 37° Male to Male NPTF 90° Elbow	1-1/4" Tube x 1-1/4" Pipe
S3754-16H	JIC 37° Male to Male NPTF 45° Elbow	1" Tube x 1" Pipe
S3735-1216	JIC12 Female to JIC16 Male Reducer	3/4" Female Tube x 1" Male Tube



STEEL 37° SAE FLARE BULKHEAD ADAPTERS

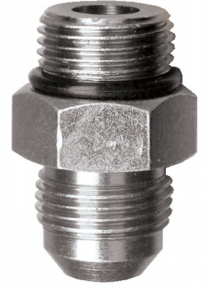
PART NUMBER	DESCRIPTION	PRODUCT INFORMATION
S3848-12E	JIC 37° Bulkhead Male to Male NPTF Connector	3/4" Tube x 3/4" Pipe
S3848-16H	JIC 37° Bulkhead Male to Male NPTF Connector	1" Tube x 1" Pipe



SHOP OUR NEW AND INNOVATIVE PRODUCTS ONLINE.

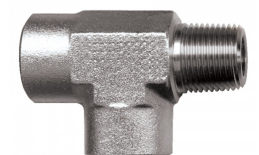
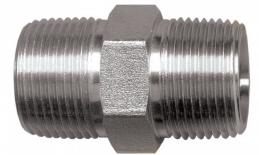
STEEL SAE O-RING BOSS ADAPTERS

PART NUMBER	DESCRIPTION	PRODUCT INFORMATION
S3648-12	JIC 37° Male to Male O-Ring Boss Connector	3/4" Tube x 1-1/16"-12 O-Ring Boss
S3648-1210	JIC 37° Male to Male O-Ring Boss Connector	3/4" Tube x 7/8"-14 O-Ring Boss
S3648-1216	JIC 37° Male to Male O-Ring Boss Connector	3/4" Tube x 1-5/16"-12 O-Ring Boss
S3648-1220	JIC 37° Male to Male O-Ring Boss Connector	3/4" Tube x 1-5/8"-12 O-Ring Boss
S3648-16	JIC 37° Male to Male O-Ring Boss Connector	1" Tube x 1-5/16"-12 O-Ring Boss
S3648-1620	JIC 37° Male to Male O-Ring Boss Connector	1" Tube x 1-5/8"-12 O-Ring Boss
S3648-20	JIC 37° Male to Male O-Ring Boss Connector	1-1/4" Tube x 1-5/8"-12 O-Ring Boss
S3648-2016	JIC 37° Male to Male O-Ring Boss Connector	1-1/4" Tube x 1-5/16"-12 O-Ring Boss



STEEL SAE PIPE ADAPTERS

PART NUMBER	DESCRIPTION	PRODUCT INFORMATION
S1022-D	Male to Male NPTF Hex Nipple	1/2" Pipe x 1/2" Pipe
S1022-E	Male to Male NPTF Hex Nipple	3/4" Pipe x 3/4" Pipe
S1022-J	Male to Male NPTF Hex Nipple	1-1/4" Pipe x 1-1/4" Pipe
S1022-K	Male to Male NPTF Hex Nipple	1-1/2" Pipe x 1-1/2" Pipe
S1099-J	Male to Male NPTF 90° Elbow	1-1/4" Pipe x 1-1/4" Pipe
S1099-K	Male to Male NPTF 90° Elbow	1-1/2" Pipe x 1-1/2" Pipe
S1010-ED	Male to Female NPTF Reducer Bushing	3/4" Male Pipe x 1/2" Female Pipe
S1010-HE	Male to Female NPTF Reducer Bushing	1" Male Pipe x 3/4" Female Pipe
S1010-JH	Male to Female NPTF Reducer Bushing	1-1/4" Male Pipe x 1" Female Pipe
S1010-MJ	Male to Female NPTF Reducer Bushing	2" Male Pipe x 1-1/4" Female Pipe
S1010-MK	Male to Female NPTF Reducer Bushing	2" Male Pipe x 1-1/2" Female Pipe
S1007-J	Female to Male to Female NPTF Street Tee	1-1/4" Male Pipe x 1-1/4" Female Pipe
S1007-K	Female to Male to Female NPTF Street Tee	1-1/2" Male Pipe x 1-1/2" Female Pipe



SHOP OUR NEW AND INNOVATIVE PRODUCTS IN STORE.

BLACK IRON PIPE FITTINGS

PART NUMBER	DESCRIPTION	PRODUCT INFORMATION
PFE916	90° Female Elbow	1" Female Pipe x 1" Female Pipe
PFE920	90° Female Elbow	1-1/4" Female Pipe x 1-1/4" Female Pipe
PFE924	90° Female Elbow	1-1/2" Female Pipe x 1-1/2" Female Pipe
PFB2016	Black Hex Pipe Bushing	1-1/4" Male Pipe x 1" Female Pipe
PFB2416	Black Hex Pipe Bushing	1-1/2" Male Pipe x 1" Female Pipe
PFB2420	Black Hex Pipe Bushing	1-1/2" Male Pipe x 1-1/4" Female Pipe
PFCN16	Close Nipple Pipe Fitting	1" Male Pipe x 1" Male Pipe
PFCN20	Close Nipple Pipe Fitting	1-1/4" Male Pipe x 1-1/4" Male Pipe
PFCN24	Close Nipple Pipe Fitting	1-1/2" Male Pipe x 1-1/2" Male Pipe
PFS916	90° Street Elbow	1" Male Pipe x 1" Female Pipe
PFS920	90° Street Elbow	1-1/4" Male Pipe x 1-1/4" Female Pipe
PFS925	90° Street Elbow	1-1/2" Male Pipe x 1-1/2" Female Pipe
PFS416	45° Street Elbow	1" Male Pipe x 1" Female Pipe
PFS420	45° Street Elbow	1-1/4" Male Pipe x 1-1/4" Female Pipe
PFS424	45° Street Elbow	1-1/2" Male Pipe x 1-1/2" Female Pipe



BARBED COMBINATION NIPPLES

PART NUMBER	DESCRIPTION	PRODUCT INFORMATION
HCN125	Male to Male Hose Barb Combination Nipple	1-1/4" Male Pipe x 1-1/4" Hose Barb
HCN150	Male to Male Hose Barb Combination Nipple	1-1/2" Male Pipe x 1-1/2" Hose Barb
BHEPS5X6	Male to Male Hose Barb Combination Nipple	1-1/4" Male Pipe x 1-1/2" Hose Barb
4604-20-20	Male Straight Thread Hose Connector	1-1/4" O-Ring Boss x 1-1/4" Hose Barb
4604-24-20	Male Straight Thread Hose Connector	1-1/4" O-Ring Boss x 1-1/2" Hose Barb
4604-24-24	Male Straight Thread Hose Connector	1-1/2" O-Ring Boss x 1-1/2" Hose Barb



SHOP OUR NEW AND INNOVATIVE PRODUCTS ONLINE.

BALL VALVES

PART NUMBER	DESCRIPTION	PRODUCT INFORMATION
2005-16	Female to Female Ball Valve	1" Female Pipe
2005-20	Female to Female Ball Valve	1-1/4" Female Pipe
2005-24	Female to Female Ball Valve	1-1/2" Female Pipe



T-CLAMPS

PART NUMBER	DESCRIPTION	PRODUCT INFORMATION
TB188	Stainless Steel T-Bolt Clamp	1-7/8" to 2-3/16"
TB200	Stainless Steel T-Bolt Clamp	2" to 2-5/16"



PUMP SUPPORT BRACKET

PART NUMBER	DESCRIPTION
GLPB10	Pump Support Bracket Kit

BULKHEAD CROSS BRACKET

PART NUMBER	DESCRIPTION
BX295	Bulkhead Cross Bracket

SHOP OUR NEW AND INNOVATIVE PRODUCTS IN STORE.

Hydraulic Reservoir, Filter, & Cooling System

Featuring a frame-mount design, measuring less than 8 inches wide and rejecting 20 horsepower of heat at 30 GPM and 80 degrees ETD (Entering Temperature Differential), the ARC-30 provides greater operating efficiency and longevity to the equipment's hydraulic drive, while also boasting the ability to be installed in tight spaces on either side of the vehicle. The ARC-30 is constructed from stainless steel and aluminum components, resulting in a corrosive-resistant unit suitable for harsh environments.



Product Features

- » Better Performance – Greater Heat Rejection
- » Compact Design - Narrow Width, Less than 8 inches
- » Minimal Fan Clearance Needed - 1-1/2 inches
- » Low Maintenance – Internal Plumbing
- » Increased Durability – Corrosion Resistant Design
- » Stainless Steel/Aluminum Construction
- » Easy Installation – Rear Stud Mounts

POPULAR HYDRAULIC RESERVOIR, FILTER, AND COOLING SYSTEM

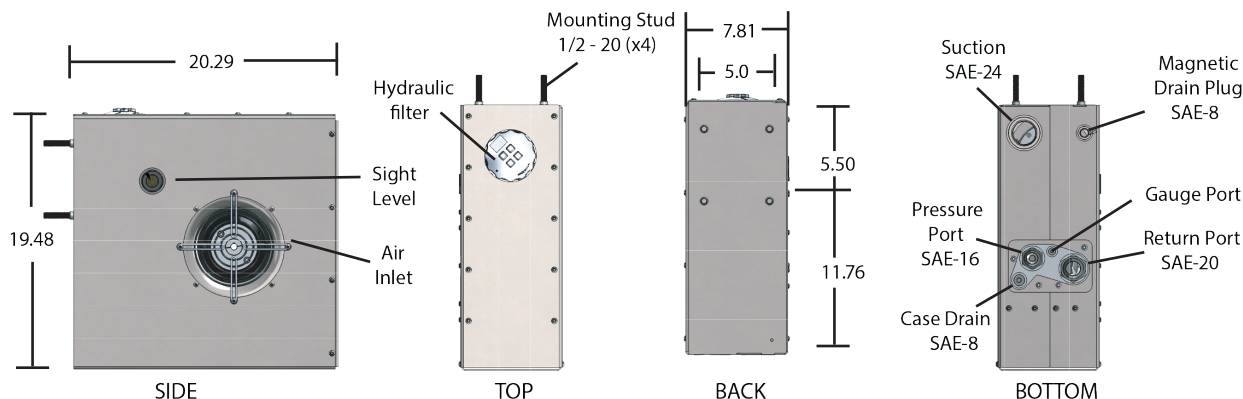
PART NUMBER	DESCRIPTION	PRODUCT INFORMATION
ARC-30	Hydraulic Cooler Assembly	30 GPM Side Frame Mount 7.8" Wide x 19.5" Tall x 20.3" Deep

PRODUCT SPECS

FLOW RATE (GPM)	RESERVOIR SIZE (GALLONS)	PRESSURE (PSI)	HP COOLED
30	4.0	Up To 4000	20

SHOP OUR NEW AND INNOVATIVE PRODUCTS ONLINE.

ARC-30 Apsco Reservoir Cooler Specifications



Additional Specifications

Capacity.....	30 GPM
Slim Line or Box.....	Slim
Tank Size.....	4 Gallon
Suction.....	SAE-24 O-Ring Boss Female
High Pressure.....	SAE-16 O-Ring Boss Female
Low Pressure Return.....	SAE-20 O-Ring Boss Female
Relief Valve.....	Adjustable – Standard Range 500-3000 PSI (Higher range upon request)
Fan.....	Hydraulic Drive 1.2 GPM
Drain.....	Magnetic Plug SAE-8 O-Ring Boss
Filter.....	Tank Top Design With Integral Breather, 25 PSI Bypass
Filter Element.....	10 Micron – Element Easily Serviceable From Top
Site Glass.....	Bulls Eye
Basic Dimensions (LxWxH).....	20 x 8 x 20 Inches
Cooler Bypass – Cold Start Up.....	60 PSI High Flow
Case Drain.....	SAE-8 O-Ring Boss Female
Finish.....	Stainless Exterior Brushed Finish
Gauge Port.....	SAE-4 O-Ring Boss Female
Weight.....	100 lbs
Heat Rejection.....	20 HP @ 30 GPM And 80°F ETD

SHOP OUR NEW AND INNOVATIVE PRODUCTS IN STORE.

Donaldson SP50/60 Low Pressure Series

The SP50/60 Spin-On Filter is an economical, low-pressure model with a broad selection of media ratings. The die cast aluminum head and steel body ensure strength and durability—perfect for a wide variety of mobile and in-plant applications.

Take advantage of Donaldson's mix and match system of in-stock heads and filter choices—so you can get exactly what you need. Filter options include: synthetic media, natural-fiber cellulose, water-absorbing cellulose media and wire mesh media. SP50/60 Spin-On filters are interchangeable with HBK05 Filters.



Applications

- » Fluid Conditioning Systems
- » In-Plant Systems
- » Mobile Equipment
- » Power Transmissions
- » Process Systems

POPULAR LOW PRESSURE FILTER SYSTEMS

PART NUMBER	DESCRIPTION	PRODUCT INFORMATION
P550388	Low Pressure Blue Series Spin-On Duramax Return Filter	4.86" Outer Diameter 6.66" Length Thread Size 1-1/2"-16 UN
P576557	Low Pressure Filter Head	5.39" Length 3.70" Height Inlet Size 1-1/4" NPT

PRODUCT SPECS

WORKING PRESSURES TO:	RATED STATIC BURST TO:	FLOW RANGE TO:
150 PSI / 1035 kPa / 10.3 bar	250 PSI / 1725 kPa / 17.2 bar	60 GPM / 227 LPM

SHOP OUR NEW AND INNOVATIVE PRODUCTS ONLINE.

Donaldson HMK04 & HMK05 Medium Pressure Series

Duramax HMK04 Spin-On Filters provide solution for higher pressures. HMK05 Spin-On Filters are perfect for high-flow applications, featuring a heavy-duty steel body and die-cast top plate for added strength. A special head-to-canister o-ring seal prevents leakage. Nitrile seals are standard.



Product Specs

Working Pressures To:

- » 500 PSI / 3450 kPa / 35 bar

Rated Static Burst To:

- » 1000 PSI / 6895 kPa / 69 bar

Flow Range To:

- » HMK04: 34 GPM / 133 LPM
- » HMK24: 60 GPM / 227 LPM

Applications

- » Case Drains
- » Cooling Circuits
- » Fluid Conditioning Systems
- » Fuel Transfer
- » Hydrostatic Charge Pumps
- » Lube Oil Systems
- » Power Transmissions
- » Return Lines
- » Side Loop Systems

HMK04 DURAMAX® SPIN-ON FILTERS

PART NUMBER	DESCRIPTION	PRODUCT INFORMATION
P166086	Medium Pressure Filter Head With Filter Gauge	4.08" Length 3.38" Height Inlet Size 1" NPT
P165332	Medium Pressure Spin-On Duramax Return Filter	3.82" Outer Diameter 9.44" Length Thread Size 1-3/8"-12 UN



Product Specs

Working Pressures To:

- » 350 PSI / 2415 kPa / 24.2 bar

Rated Static Burst To:

- » 800 PSI / 5520 kPa / 55.2 bar

Flow Range To:

- » HMK05: 50 GPM / 189 LPM
- » HMK25: 100 GPM / 379 LPM

Applications

- » Case Drains
- » Cooling Circuits
- » Fluid Conditioning Systems
- » Fuel Transfer
- » Hydrostatic Charge Pumps
- » Lube Oil Systems
- » Power Transmissions
- » Return Lines
- » Side Loop Systems

HMK05 DURAMAX® SPIN-ON FILTERS

PART NUMBER	DESCRIPTION	PRODUCT INFORMATION
P167294	Medium Pressure Filter Head With Filter Gauge	5.03" Length 3.79" Height Inlet Size 1-1/4" - 11-1/2 NPT
P165569	Medium Pressure Spin-On Duramax Return Filter	4.76" Outer Diameter 11.63" Length Thread Size 1-3/4"-12 UN

SHOP OUR NEW AND INNOVATIVE PRODUCTS IN STORE.

Wheelco Support: 800.952.3674

1. What work function are you running?

- ☐ End Dump
- ☐ Walking Floor
- ☐ Side Dump
- ☐ Lowboy
- ☐ Roll-Off
- ☐ Combo Functions (End Dump/Walking Floor)
- ☐ Other

If other, please state: _____

2. What is the transmission make and model?

3. What is the required flow (GPM) needed to run your work? This can be obtained from equipment manufacturer.

4. How much pressure will the work device generate? (System Operating Pressure) This can be obtained from equipment manufacturer.

5. What will be the engine speed (RPM) while running this system?

6. What transmission aperture or position will the PTO be mounted?

7. What type of PTO output will be used?

- ☐ Direct Mounted Pump (Flange Mount)
- ☐ Driveshaft
- ☐ Other

If other, please state: _____

8. What type of cab controls are needed?

- ☐ Dash Mounted
- ☐ Floor Mounted Tower
- ☐ Other

If other, please state: _____

INSERT YOUR PTO NUMBERS

Eaton	PTO Series	Special Options	Gear Ratio	Shifter Type	Input Gear	Arrangement	Output
PT	1000	X	J	A	1	1	RA

Common Wet Kit Application Specs

Check with your trailer manufacturer for specific hydraulic specifications. Often these can be found on manufacturer websites using the trailer or equipment model number.

End Dump Application:

- » System Operating Pressure: 2200 PSI
- » Required Flow GPM: 32-36 GPM

Walking Floor Application:

- » System Operating Pressure: 2700-3000 PSI
- » Required Flow GPM: 25-30 GPM

Side Dump Application:

- » System Operating Pressure: 2300-2500 PSI
- » Required Flow GPM: 25-30 GPM

HYDRAULIC PUMP TROUBLESHOOTING GUIDE

CONDITION	LIKELY CAUSE	CORRECTION
No oil flow from pump.	No oil in reservoir. Closed shut-off valve. Air lock in pump inlet hose. Pump is wrong rotation for application. Hoses are reversed. PTO not engaged. Pump worn or damaged.	Fill reservoir with approved fluid. Open valve. Use compressed air to pressurize reservoir while running pump or fill inlet hose with oil from the pump end. Replace or re-configure pump to correct rotation. Change inlet and pressure hose locations. See "PTO Troubleshooting" Repair or replace pump.
Pump will not build and/or hold pressure.	Relief valve improperly set. Relief valve stuck open. Pump worn or damaged.	Adjust relief valve to manufacturer's specification. Remove, clean, and re-set to specification. Repair or replace pump.
Pump is noisy	Aeration (Air in system). Cavitation (Cavitation is caused by excessive vacuum at the pump inlet. Test with a vacuum gauge at the inlet port. Gauge should register under 5 inch Hg. at normal operating speed.)	See "Oil foaming". Increase inlet hose size; Re-route inlet hose; Check for kinked or collapsed inlet hose; Check for clogged reservoir breather or strainer; Inlet hose should be S.A.E. type 100R4 hose only.
Pump leaks:		
At shaft seal	Dirt under seal. Damaged seal or pump body. Improperly fitted seal.	Replace seal. Examine pump shaft for scoring. Replace seal or body section. Replace seal.
At body section	Damaged o-ring or body. Improperly torqued bolts.	Replace o-ring or body section. Torque to specification.
At pump port	Loose fitting. Damaged fitting. Damaged pump body.	Tighten fitting. Replace fitting. Replace body section.
<i>*Do not use teflon tape on pipe thread fittings</i>		
Pump is hot	Low oil level. Reservoir too small. Dirty oil. Relief valve stuck open. Relief valve improperly set. Pump too large for application. Undersized system component. Improper weight oil.	Fill reservoir. Increase reservoir size. Replace oil and filter. Remove, clean, and reset. Adjust relief valve to manufacturer's specification. Review application. Replace with correct model. Review application. Replace with correct model. Replace with correct oil.
<i>*Oil temperature should not exceed 140° F (60° C)</i>		
Oil foaming	Low oil level. Loose inlet fitting. Damaged shaft seal. Leak in inlet hose. Improper tank baffle.	Fill reservoir. Tighten fitting. Replace seal. Replace hose. Install baffle or diffuser.

SHOP OUR NEW AND INNOVATIVE PRODUCTS IN STORE.

4000 Series | Single Acting | Pin-Pin Mounting



Product Features

- » Self-bleeding design
- » Preloaded v-packing with a self-adjusting wave spring energizer or an energized z-seal package as an option
- » Threaded head-nuts for added strength and field seal adjustment
- » Longer bearing length for stability

POPULAR 4000 SERIES

PART NUMBER	DESCRIPTION	PRODUCT INFORMATION
53-4592-72	Pin - Pin Mounting	Barrel 6-1/32" O.D. 3 Moving Stages Closed 36.62" Extended 108.56"
63-4402-120	Pin - Pin Mounting	Barrel 7-1/16" O.D. 3 Moving Stages Closed 53" Extended 173.38"
74-4561-156	Pin - Pin Mounting	Barrel 8-1/8" O.D. 4 Moving Stages Closed 53.38" Extended 208.56"
85-4402-170	Pin - Pin Mounting	Barrel 9-1/8" O.D. 5 Moving Stages Closed 49.88" Extended 218.50"
85-4402-190	Pin - Pin Mounting	Barrel 9-1/8" O.D. 5 Moving Stages Closed 53.88" Extended 242.50"
85-4402-235	Pin - Pin Mounting	Barrel 9-1/8" O.D. 5 Moving Stages Closed 65" Extended 299.25"
85-4512-265	Pin - Pin Mounting	Barrel 9-1/8" O.D. 5 Moving Stages Closed 70.88" Extended 334.50"

SHOP OUR NEW AND INNOVATIVE PRODUCTS ONLINE.

4000 Series | Inverted Mount | Trunnion To Pin Mounting



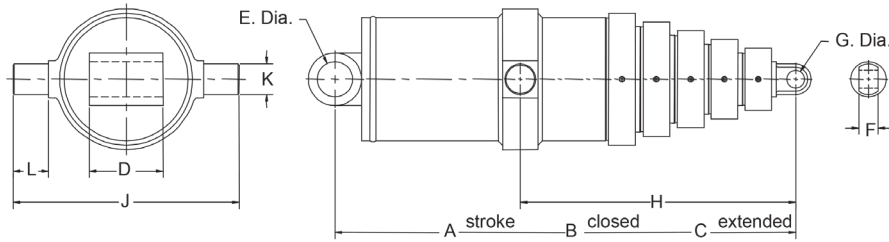
Product Features

- » Trunnion to Pin Mounting
- » Self-bleeding design
- » Preloaded v-packing with a self-adjusting wave spring energizer or an energized z-seal package as an option
- » Threaded head-nuts for added strength and field seal adjustment
- » Longer bearing length for stability

POPULAR INVERTED 4000 SERIES

PART NUMBER	DESCRIPTION	PRODUCT INFORMATION
85-4499-235	Trunnion To Pin Mounting	Barrel 9-1/8" O.D. 5 Moving Stages Closed 15.50" Extended 250.38"
85-4499-250	Trunnion To Pin Mounting	Barrel 9-1/8" O.D. 5 Moving Stages Closed 15.50" Extended 265.38"
85-4499-265	Trunnion To Pin Mounting	Barrel 9-1/8" O.D. 5 Moving Stages Closed 15.50" Extended 280.38"
85-4499-280	Trunnion To Pin Mounting	Barrel 9-1/8" O.D. 5 Moving Stages Closed 15.50" Extended 295.38"

SHOP OUR NEW AND INNOVATIVE PRODUCTS IN STORE.



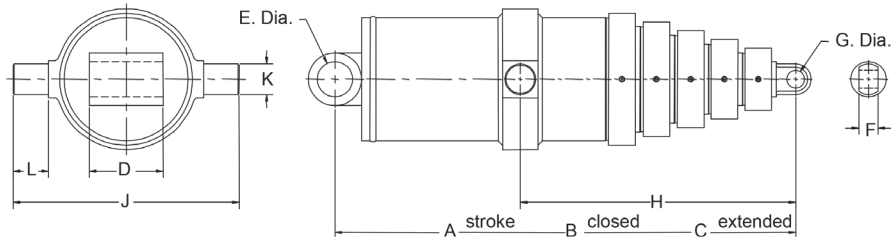
4000 SERIES REFERENCE SHEET

MODEL NUMBER	STROKE A	CLOSED B	EXT. C	BASE MOUNT		PLUNGER MOUNT		TRUNNION MOUNT DIMS				GAL. FILL	GAL. EXT.	DRY WT*
				D	E	F	G	H	J	K	L			
53-4592-72	71.94	36.62	108.56	7.00	2.06	1.50	2.06					1.3	4	156
53-4592-84	84.19	41.12	125.31	7.00	2.06	1.50	2.06					1.4	4.7	176
53-4592-106	106.06	48.00	154.06	7.00	2.06	1.50	2.06					1.7	6	204
53-4459-128	125.94	54.50	180.44	7.00	2.06	1.50	1.78					2	7.1	232
53-4531-130	126.12	54.56	180.69	7.00	2.06	2.00	1.78					2	7.1	233
63-4402-84	84.38	41.00	125.38	7.00	2.12	2.00	2.06					1.8	7.3	214
63-4402-104	103.75	47.62	151.37	7.00	2.12	2.00	2.06					2.1	9	247
63-4402-108	108.38	49.00	157.38	7.00	2.12	2.00	2.06					2.2	9.4	254
63-4402-120	120.38	53.00	173.38	7.00	2.12	2.00	2.06					2.4	10.4	274
63-4680-120 **	120.38	53.00	173.38	7.00	2.12	2.00	2.06					2.4	10.4	274
63-4402-126	126.38	55.00	181.38	7.00	2.12	2.00	2.06					2.5	1	284
63-4402-132	132.38	57.00	189.38	7.00	2.12	2.00	2.06					2.7	11.5	294
63-4402-140	140.62	59.75	200.38	7.00	2.12	2.00	2.06					2.8	12.2	307
63-4582-140	139.88	60.00	199.88	N/A	N/A	3.97	1.56	14.38	12.38	1.75	1.69	3.5	8	330
64-4435-135	134.75	47.13	181.88	8.00	1.87	2.69	1.56					2.5	9.7	271
64-4480-135 **	134.75	47.13	181.88	8.00	1.87	2.69	1.56					2.5	9.7	271
64-4435-156	155.75	52.38	208.13	8.00	1.87	2.69	1.56					2.8	11.2	301
64-4480-156 **	155.75	52.38	208.13	8.00	1.87	2.69	1.56					2.8	11.2	301
64-4467-156	155.75	52.63	208.38	7.25	2.06	1.75	2.03					2.8	11.2	300
64-4483-156 **	155.75	52.63	208.38	7.25	2.06	1.75	2.03					2.8	11.2	300
73-4500-110	108.93	49.88	158.81	8.62	2.12	2.00	2.06					2.7	13.5	319
73-4500-118	117.18	52.12	169.31	8.62	2.12	2.00	2.06					2.8	14.5	331
73-4500-127	126.19	55.12	181.31	8.62	2.12	2.00	2.06					3	15.7	348
73-4500-142	141.19	60.12	201.31	8.62	2.12	2.00	2.06					3.3	17.5	378
73-4500-151	150.19	63.12	213.31	8.62	2.12	2.00	2.06					3.5	18.7	396
74-4401-120	119.94	44.75	164.69	8.62	2.12	2.00	2.06					2.8	12.6	310
74-4401-135	134.68	48.25	182.93	8.62	2.12	2.00	2.06					3.1	14.2	333
74-4401-140	139.69	49.50	189.19	8.62	2.12	2.00	2.06					3.2	14.8	342
74-4401-156	155.18	53.38	208.56	8.62	2.12	2.00	2.06					3.5	16.5	368
74-4401-161	160.19	54.62	214.81	8.62	2.12	2.00	2.06					3.6	17	377
74-4561-161 **	160.19	54.63	214.81	8.63	2.12	2.00	2.06					3.6	17	377
74-4401-167	166.69	56.25	222.94	8.62	2.12	2.00	2.06					3.7	17.7	388
74-4401-180	179.69	59.50	239.19	8.62	2.12	2.00	2.06					4	19	410
84-4466-148	145.00	51.50	196.50	9.50	2.12	2.00	2.06					3.9	21.2	447

* Weight in pounds

** Cylinders with Z-Seal Packing Design

SHOP OUR NEW AND INNOVATIVE PRODUCTS ONLINE.



4000 SERIES REFERENCE SHEET CONTINUED

MODEL NUMBER	STROKE A	CLOSED B	EXT. C	BASE MOUNT		PLUNGER MOUNT		TRUNNION MOUNT DIMS				GAL. FILL	GAL. EXT.	DRY WT*
				D	E	F	G	H	J	K	L			
84-4466-156	153.00	53.50	206.50	9.50	2.12	2.00	2.06					4.1	22.4	464
84-4466-161	157.50	54.88	212.38	9.50	2.12	2.00	2.06					4.2	23.1	475
84-4466-170	167.00	57.00	224.00	9.50	2.12	2.00	2.06					4.4	24.5	494
84-4466-180	176.50	59.50	236.00	9.50	2.12	2.00	2.06					4.6	25.9	515
85-4402-170	168.62	49.88	218.50	9.50	2.12	2.00	2.06					4.2	21.3	455
85-4402-190	188.62	53.88	242.50	9.50	2.12	2.00	2.06					4.6	23.8	492
85-4511-190 **	188.62	53.88	242.50	9.50	2.12	2.00	2.06					4.6	23.8	492
85-4402-220	218.62	59.88	278.50	9.50	2.12	2.00	2.06					5.2	27.7	548
85-4499-220	219.87	60.38	280.25	N/A	N/A	3.00	2.06	15.50	14.00	2.25	1.25	7.30	28.20	566
85-4511-220 **	218.62	59.88	278.50	9.50	2.12	2.00	2.06					5.2	27.7	548
85-4402-235	234.25	65.00	299.25	9.50	2.12	2.00	2.06					5.8	29.7	604
85-4499-235	234.87	65.38	300.25	N/A	N/A	3.00	2.06	15.50	14.00	2.25	1.25	7.80	30.10	621
85-4511-235 **	234.25	65.00	299.25	9.50	2.12	2.00	2.06					5.8	29.7	604
85-4402-250	249.25	68.00	317.25	9.50	2.12	2.00	2.06					6.1	31.7	632
85-4499-250	249.87	68.38	318.25	N/A	N/A	3.00	2.06	15.50	14.00	2.25	1.25	8.20	32.00	649
85-4511-250 **	249.25	68.00	317.25	9.50	2.12	2.00	2.06					6.1	31.7	632
85-4453-265	263.62	70.88	334.50	9.50	2.12	2.00	2.06					5.6	33.9	659
85-4466-265	264.25	74.38	338.63	9.50	2.12	2.00	2.06					6.8	33.7	702
85-4499-265	264.87	74.88	339.75	N/A	N/A	3.00	2.06	15.50	14.00	2.25	1.25	8.70	33.90	721
85-4510-265 **	264.25	74.38	338.63	9.50	2.12	2.00	2.06					6.8	33.7	702
85-4512-265 **	263.62	70.88	334.50	9.50	2.12	2.00	2.06					5.6	33.9	659
85-4499-280	279.87	77.88	357.75	N/A	N/A	3.00	2.06	15.50	14.00	2.25	1.25	9.20	35.80	749
85-4466-280	279.25	77.50	356.75	9.50	2.12	2.00	2.06					7.1	35.7	733
85-4466-285	284.25	78.50	362.75	9.50	2.12	2.00	2.06					7.2	36.4	742
95-4461-220	219.62	60.88	280.50	10.69	2.12	2.00	2.06					6.6	38	711
95-4461-235	232.75	65.00	297.75	10.69	2.12	2.00	2.06					7.2	40.1	770
95-4461-250	249.88	72.62	322.50	10.69	2.12	2.00	2.06					8.2	43.6	876
95-4461-265	264.88	75.62	340.50	10.69	2.12	2.00	2.06					8.6	46.3	911
95-4500-265 **	264.88	75.62	340.50	10.69	2.12	2.00	2.06					8.6	46.3	944
95-4461-280	279.88	78.62	358.50	10.69	2.12	2.00	2.06					8.9	48.9	947
95-4461-300	299.88	82.62	382.50	10.69	2.12	2.00	2.06					9.5	52.4	994
95-4461-320	319.88	86.62	406.50	10.69	2.12	2.00	2.06					10	55.9	1031
95-4461-340	339.88	90.62	430.50	10.69	2.12	2.00	2.06					10.5	59.4	1099

* Weight in pounds

** Cylinders with Z-Seal Packing Design

SHOP OUR NEW AND INNOVATIVE PRODUCTS IN STORE.



YOUR TRUSTED FLUID POWER DISTRIBUTOR



Wheelco Truck and Trailer carries a complete line of fluid power products, engineered and integrated custom solutions. Our extensive fluid power line offers PTOs, reservoirs, pumps and motors, valves, wet kits, filter systems, consoles and controls as well as hydraulic hoses, cylinders, couplers, fittings and more!

SHOP OUR NEW AND INNOVATIVE PRODUCTS.

WHEELCO.COM